

# BASIC USER FEATURES

## ADDITIONAL ADVANCED COPY FEATURE FUNCTIONS AVAILABLE

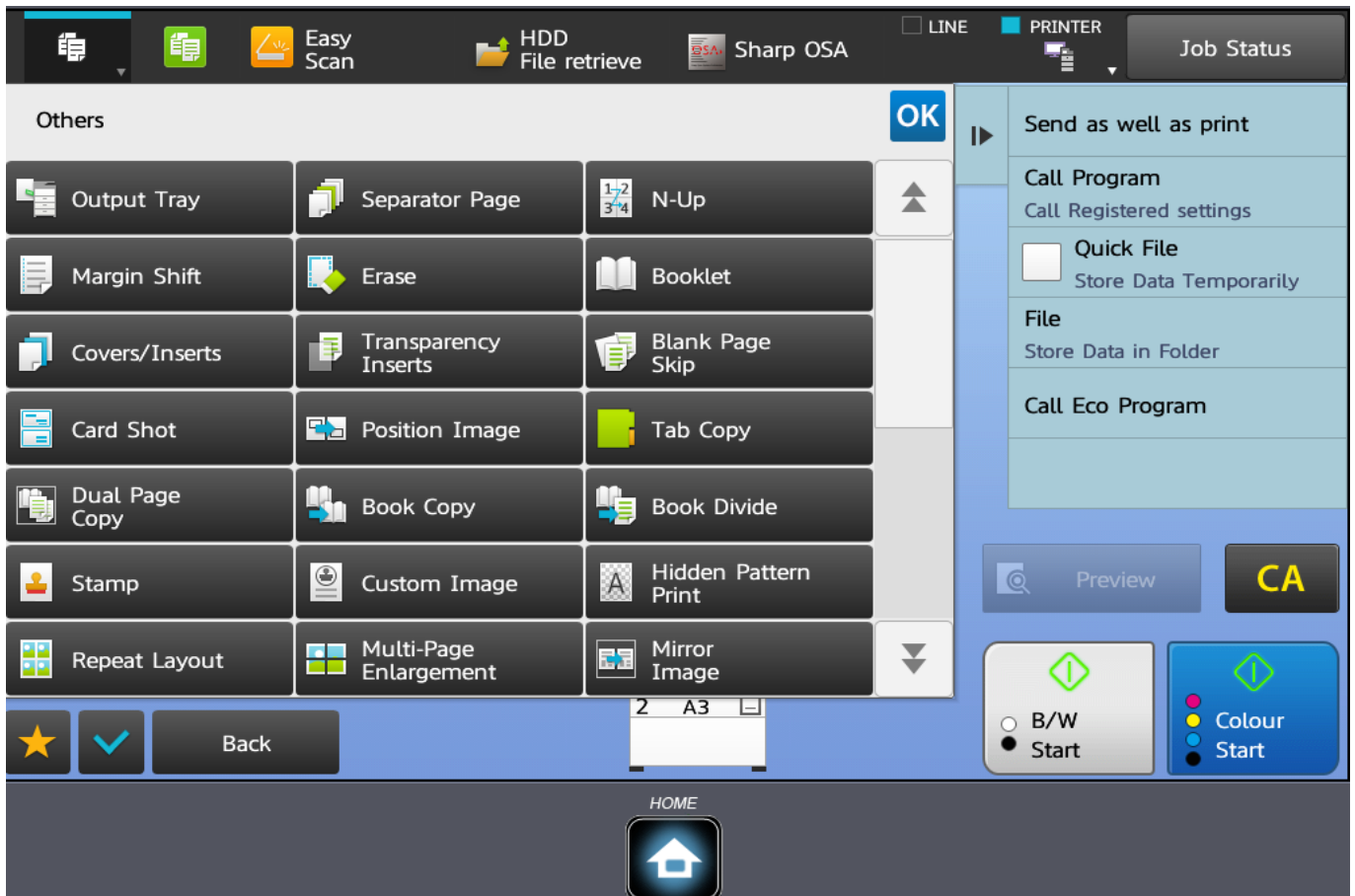
### COPY FEATURES

(ADDITIONAL ADVANCED COPY FEATURE FUNCTIONS AVAILABLE)



1. To view all available advanced feature options, click on OTHERS menu.

# BASIC USER FEATURES



- Output Tray : To select available trays.
- Separator Page : This function is to set additional paper as separator.
- N-UP : To print multiple pages in one page. Up to 8 pages.
- Margin Shift : To set margin output.
- Erase : Editing feature to erase or edit scanned document before copy.
- Booklet : To copy pages of paper into booklet.
- Covers/Inserts : Feature to setting additional papers automatically.
- Transparency Inserts : To set input of transparency paper film.
- Blank Page Skip : To exclude any blank page from copy.
- Card Shot : Copy standard card size front and back without easily.
- Position Image : To reposition image before copy.
- Tab Copy : Tab paper print copy
- Dual-Page Copy : Copy 1 page each.
- Book Copy : Book copy feature function which make a copy in facing pages of an open book.
- Book Divide : This function splits a saddle-stitch original such as a catalogue or a pamphlet page by page, and copies in sequence.
- Stamp : Additional feature to print information such as watermark, date, label and others.
- Custom Image : Pre-registered custom image as watermark.
- Hidden Pattern Print : Print pattern data such as DO NOT COPY behind the printed data.
- Repeat Layout : Re-print the same images.
- Multi-Page Enlargement : This function separately copies an enlarged original image on multiple sheets.
- Mirror Image : This function makes copies by inverting the original into a mirror image.

Unique solution ID: #1029

Author: Admin IT

Last update: 2024-09-10 10:08