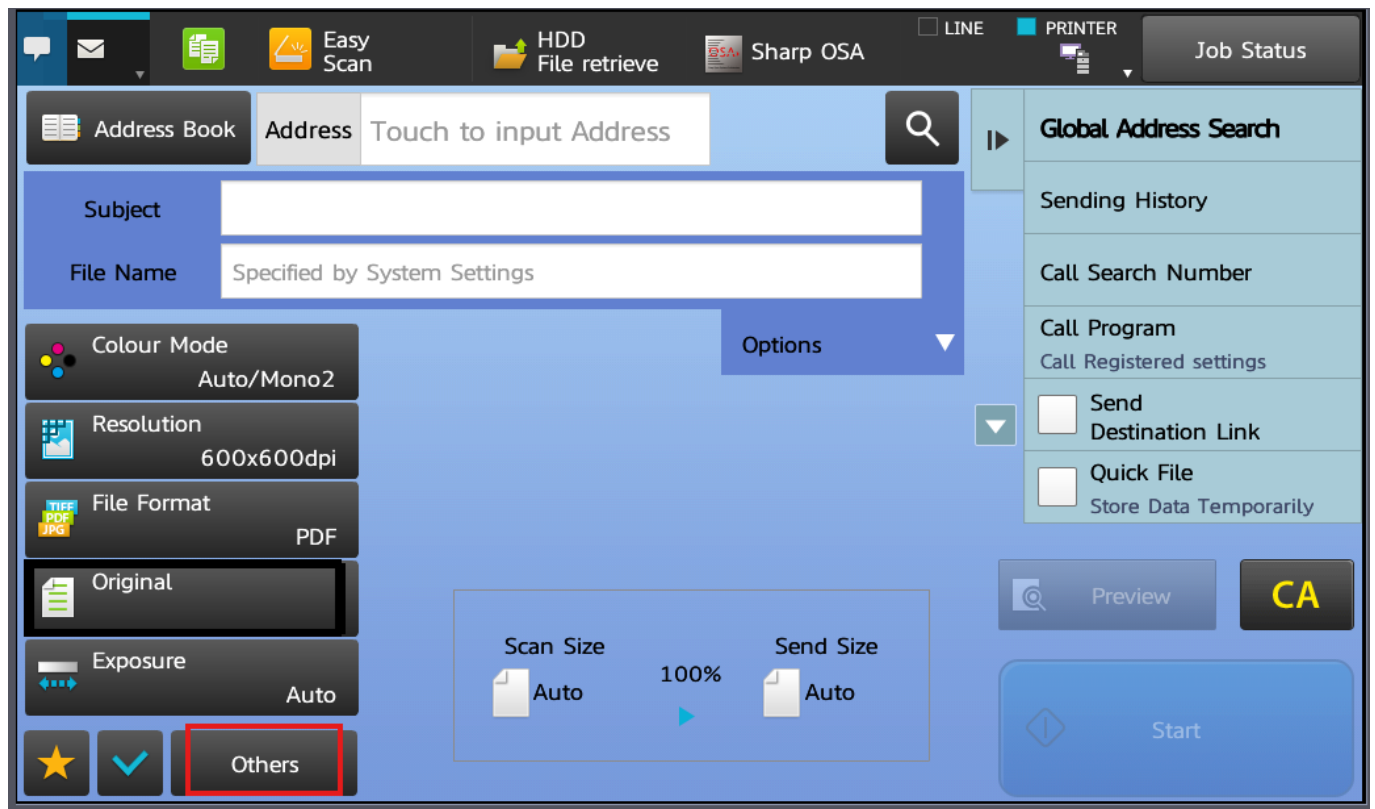
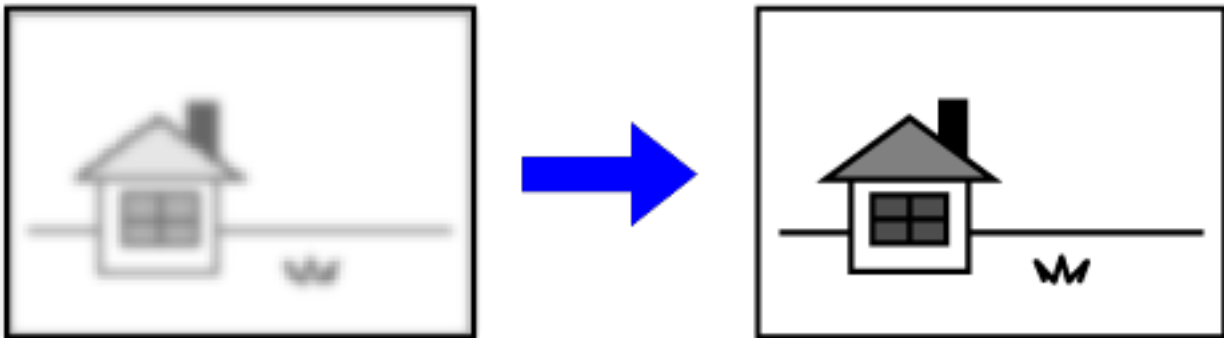


BASIC USER FEATURES

HOW TO USE CONTRAST FEATURES

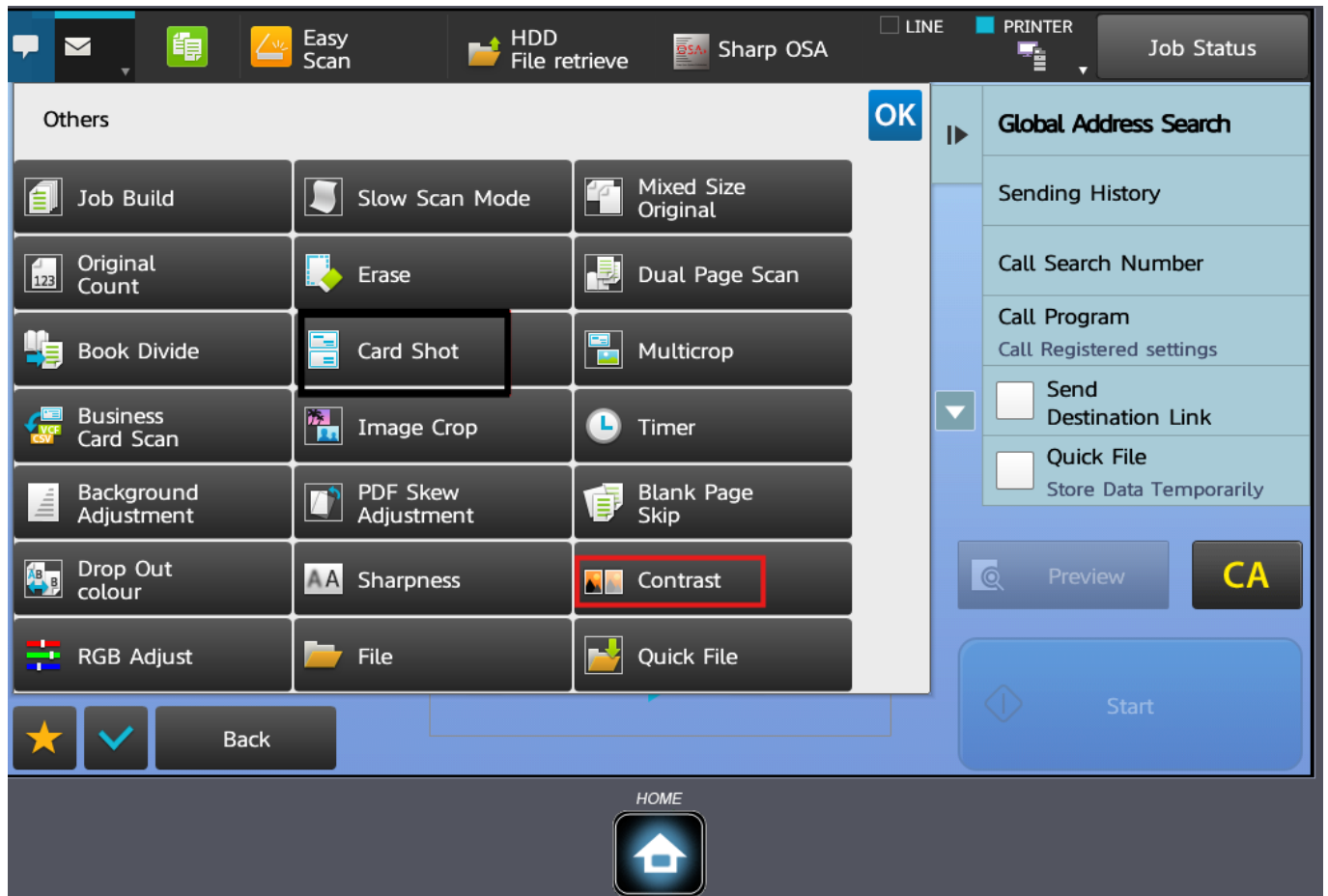
SCAN FEATURES FUNCTIONS (CONTRAST ADJUSTMENT)

Contrast adjustment is to adjust document contrast.

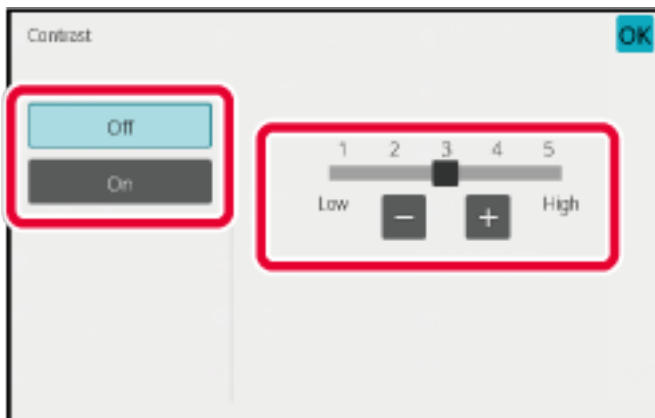



1. In the scan mode menu, choose OTHERS to view all additional features.

BASIC USER FEATURES



2. Choose CONTRAST option.



3. Use  button or slider to make adjustment. Press OK or START to start scanning.

Unique solution ID: #1020

Author: Admin IT

Last update: 2024-09-09 04:53