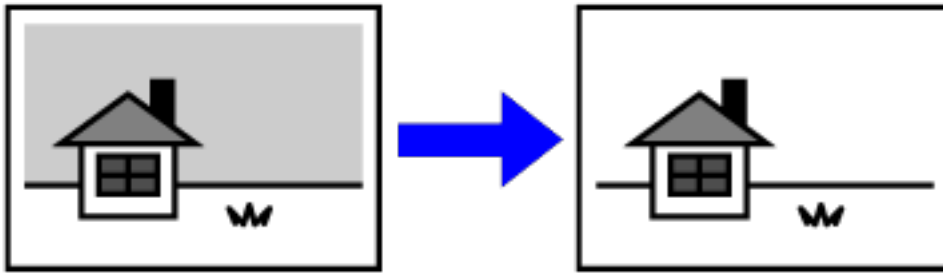


BASIC USER FEATURES

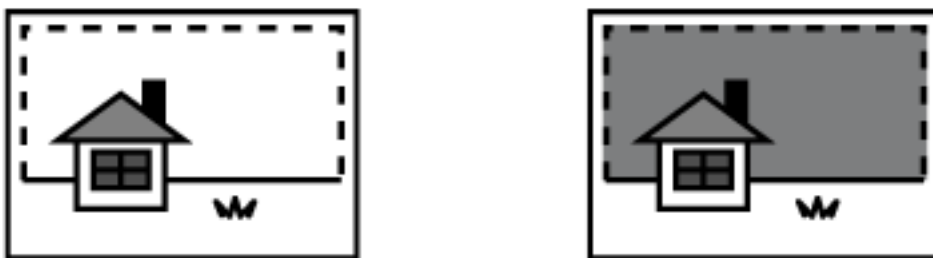
HOW TO USE BACKGROUND ADJUSTMENT FEATURE

SCAN FEATURES FUNCTIONS (BACKGROUND ADJUSTMENT)

Background adjustment function is to do adjust background of document become darker or lighter.



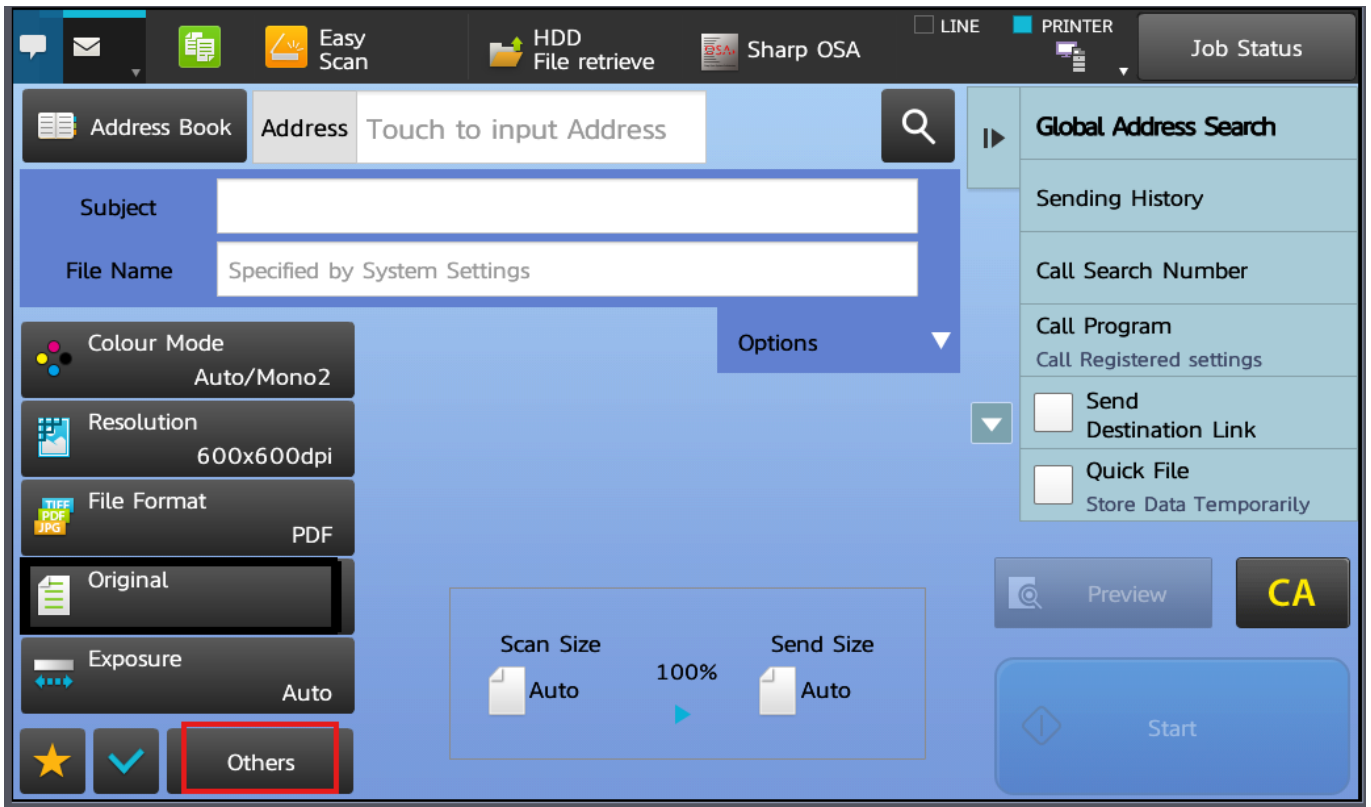
Adjust light areas in this way.



Level [-] ←————→ Level [+]

[+] makes the background darker.
[-] makes the background lighter.

BASIC USER FEATURES

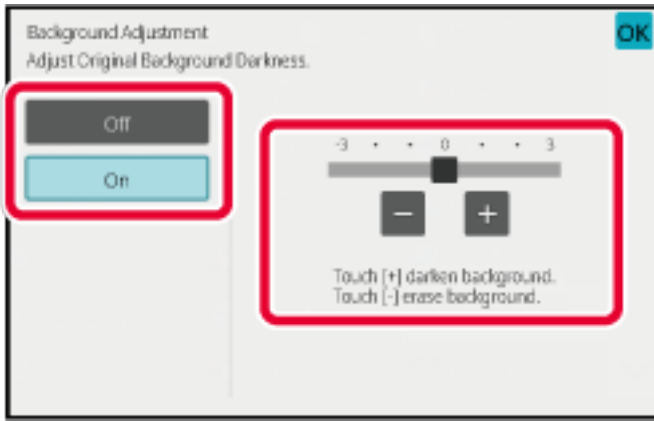



1. In the scan mode menu, choose OTHERS to view all additional features.



2. Choose BACKGROUND ADJUSTMENT option.
Page 2 / 3

BASIC USER FEATURES



3. Use  button or slider to make adjustment. Press OK or START to start scanning.

Unique solution ID: #1019

Author: Admin IT

Last update: 2024-09-09 04:49