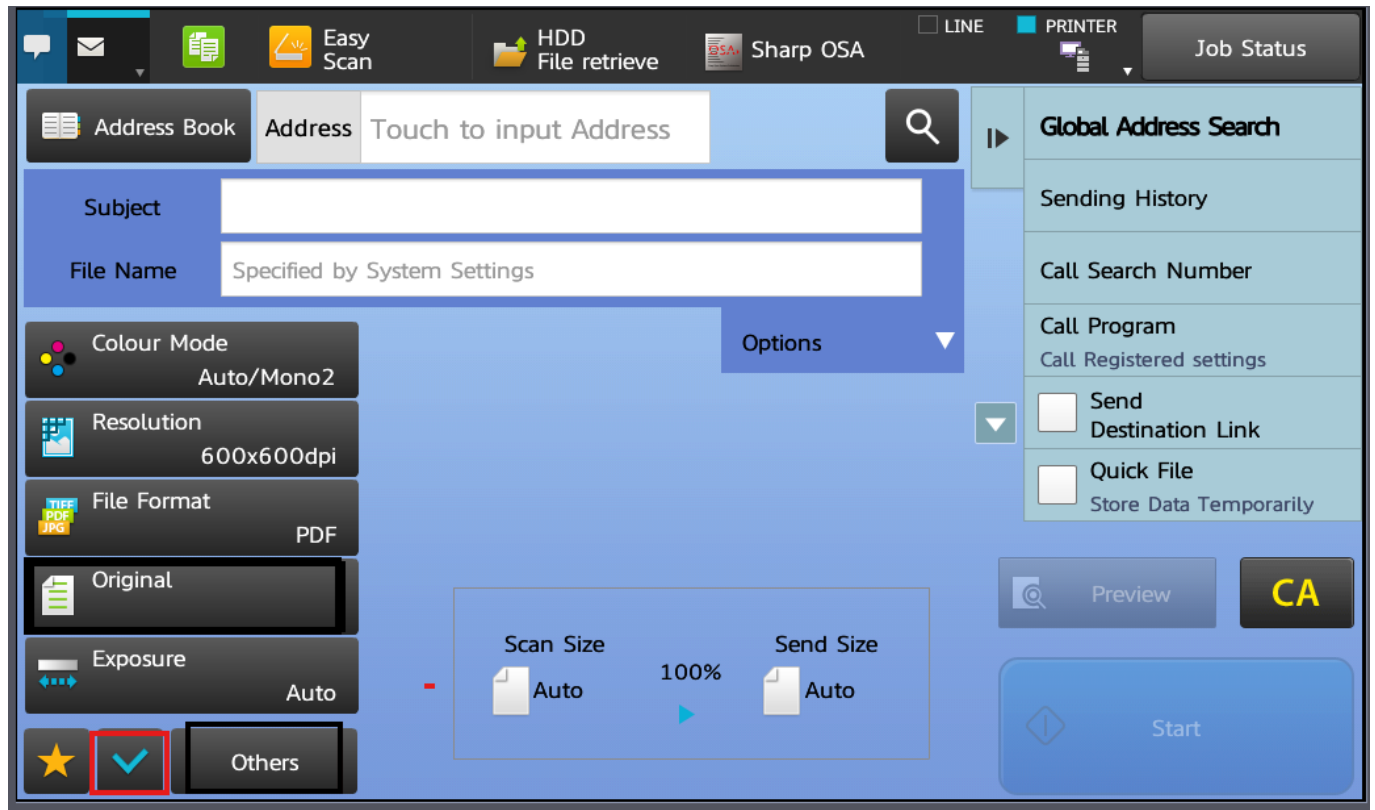


BASIC USER FEATURES

HOW TO SCAN MULTI SETS OF DOCUMENTS INTO ONE FILE USING JOB BUILD OPTION

SCAN FEATURES FUNCTIONS (JOB BUILD)

Job Build features is to do multi sets of documents before send in one file.



1. In the scan mode menu, tick on checkmark icon at the bottom to enable JOB BUILD features.
2. Start scanning your first original set and continue to the next sets when finished. Click on READ-END button when all sets are finish scanning.

Unique solution ID: #1017

Author: Admin IT

Last update: 2024-09-09 04:28