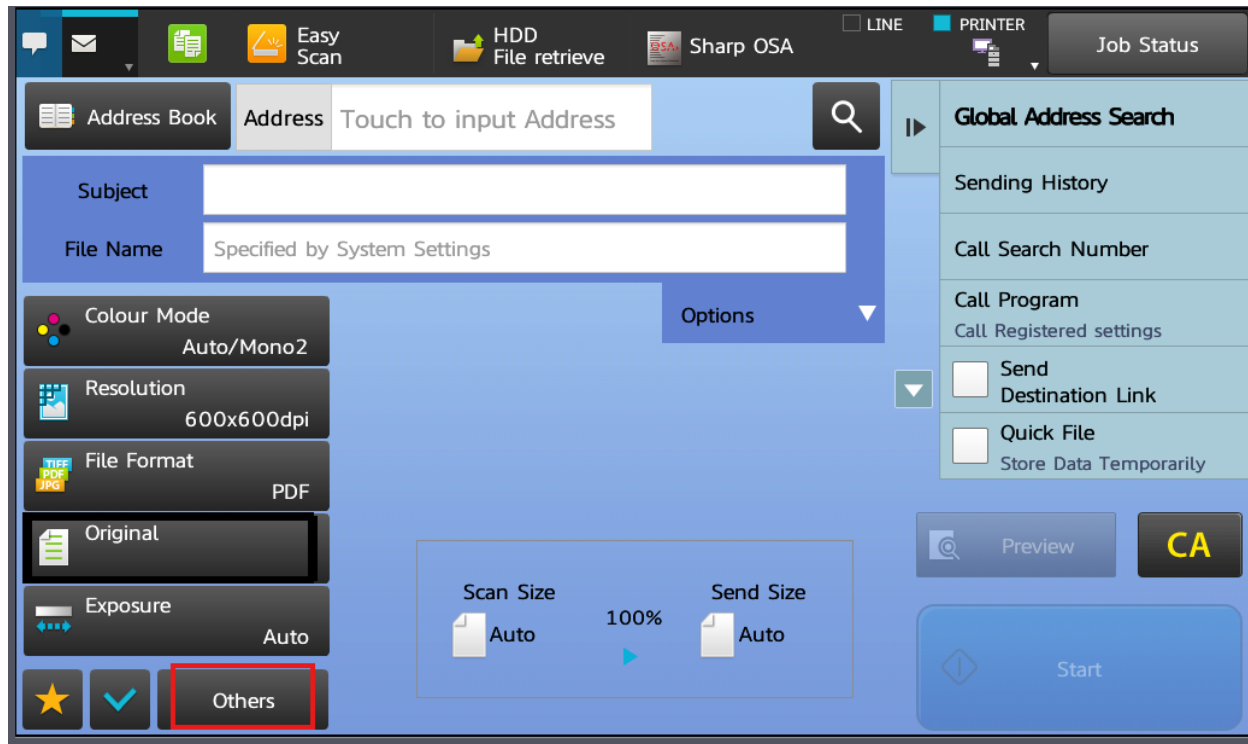


BASIC USER FEATURES

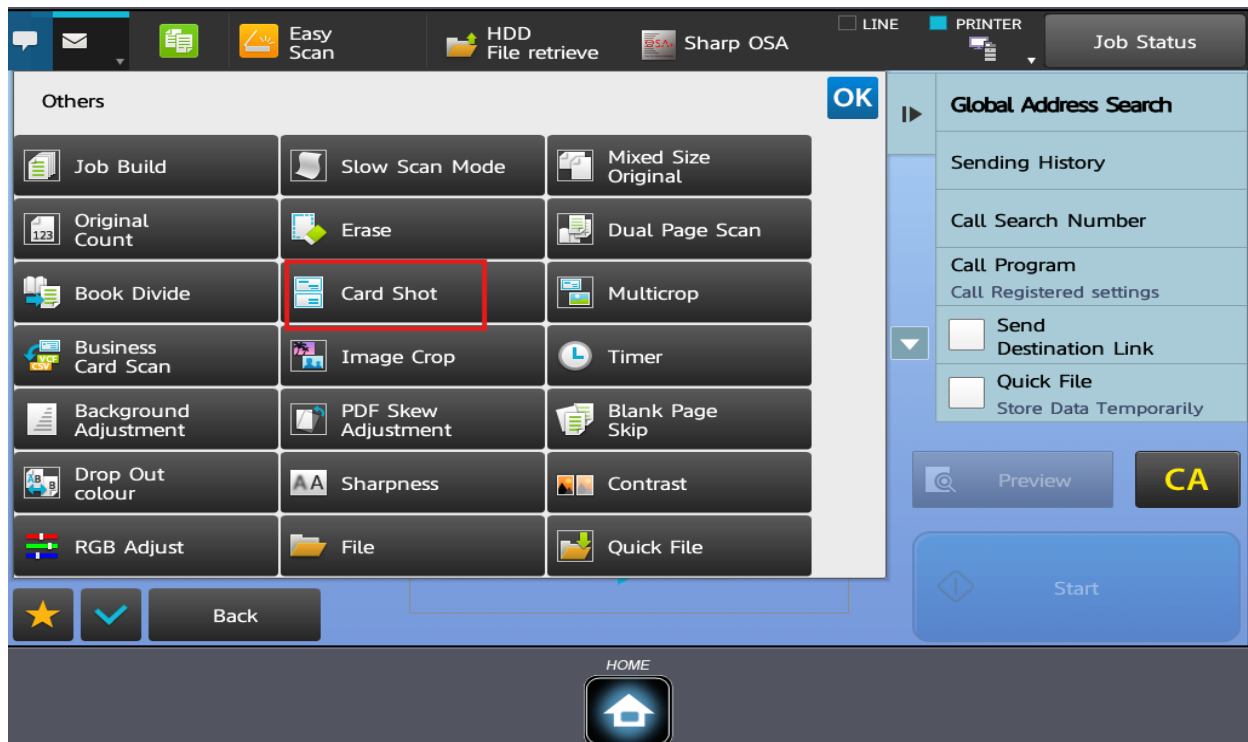
HOW TO USE CARD SHOT FEATURES

SCAN FEATURES FUNCTIONS (CARD SHOT FEATURES)

CARD SHOT features is build-in to scan or print standard card size automatically.

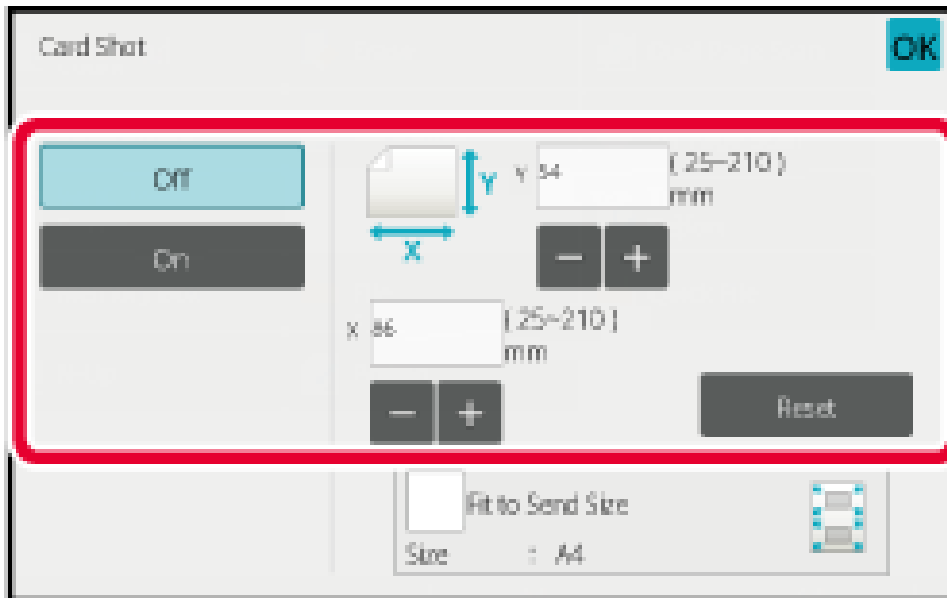


1. In the SCAN MODE menu, choose OTHERS to view all additional features.



2. In the menu list, choose option Card Shot.

BASIC USER FEATURES



3. Select button ON to enable card shot feature. The size is automatically configured. If you need to scan or print different sizes of card, you can manually change the size.

Unique solution ID: #1016

Author: Admin IT

Last update: 2024-09-09 04:15